



ALASKA DIVISION OF HOMELAND SECURITY & EMERGENCY MANAGEMENT



SITUATION REPORT 22-031 • JANUARY 31, 2022

Toll-Free 1.800.478.2337

Anchorage Area 907.428.7000

SEOC 907.428.7100

<p><b><u>SEOC Preparedness Level</u></b> Level 2 – Heightened Awareness</p>	<p><a href="http://ready.alaska.gov">http://ready.alaska.gov</a></p>	<p><b><u>National Terrorism Advisory System:</u></b> Read the updated NTAS Bulletin <a href="#">here</a></p>
<p><b><u>Maritime Security (MARSEC)</u></b> Level:1-Minimum Appropriate Security Measures</p>	<p>WHO Novel Coronavirus Pandemic (COVID-19): <a href="#">2019 Novel Coronavirus</a></p>	<p><b><u>Alaska Military Installation Force Protection Level:</u></b> FPCON Bravo</p>

(Significant changes from previous situation reports are in red.)

**Significant Issues:**

**SEOC at Level 2 – Heightened Awareness – Statewide Severe Weather Impacts**

The State Emergency Operations Center (SEOC) remains activated in a hybrid virtual/in-person Incident Command structure to manage the current state declared disaster responses and other incidents arising statewide.

See the attached Press Release regarding Disaster Assistance Centers for State Individual Assistance from the 2021-2022 Alaska Winter Storms, or visit online at [Read.Alaska.Gov](http://Read.Alaska.Gov)

**Threat Level Changes:**

None

**State of Alaska Department of Health and Social Services (DHSS)**

DHSS is now leading the State of Alaska COVID-19 Recovery through Department Operations, supported by SEOC and other state departments as required.

For current COVID-19 information, see:

<https://covid19.alaska.gov/>

<https://www.cdc.gov/coronavirus/2019-ncov/index.html>

**NTAS BULLETIN**

To read current or expired advisories, click the link below:

<https://www.dhs.gov/national-terrorism-advisory-system>

**Travel Alerts and Conditions**

For current driving conditions dial 511 or link to <http://511.alaska.gov/>

## **Barry Arm Landslide / Tsunami Risk**

For the latest information on the Barry Arm Landslide and Tsunami risk, click here:  
[DGGS Barry Arm Landslide and Tsunami Hazard](#)

## **Recent Earthquakes**

USGS Earthquake Information: <http://earthquake.usgs.gov/>  
National Tsunami Warning Center: <http://tsunami.gov/>

## **Alaska Volcanoes**

**Davidof** Alert Level: **Advisory** and Aviation Color Code: **Yellow**  
**Great Sitkin** Alert Level: **Watch** and Aviation Color Code: **Orange**  
**Pavlof** Alert Level: **Watch** and Aviation Color Code: **Orange**  
**Semisopchnoi** Alert Level: **Watch** and Aviation Color Code: **Orange**  
For Alaska Volcano updates, go to: <https://www.avo.alaska.edu/>

## **Air Quality Index (AQI) Advisories**

**Stage 2 Alert in effect for Fairbanks and North Pole until 12pm tonight.**

For the most up to date Air Quality Index Advisories:  
<http://dec.alaska.gov/Applications/Air/airtoolsweb/Home/Index>

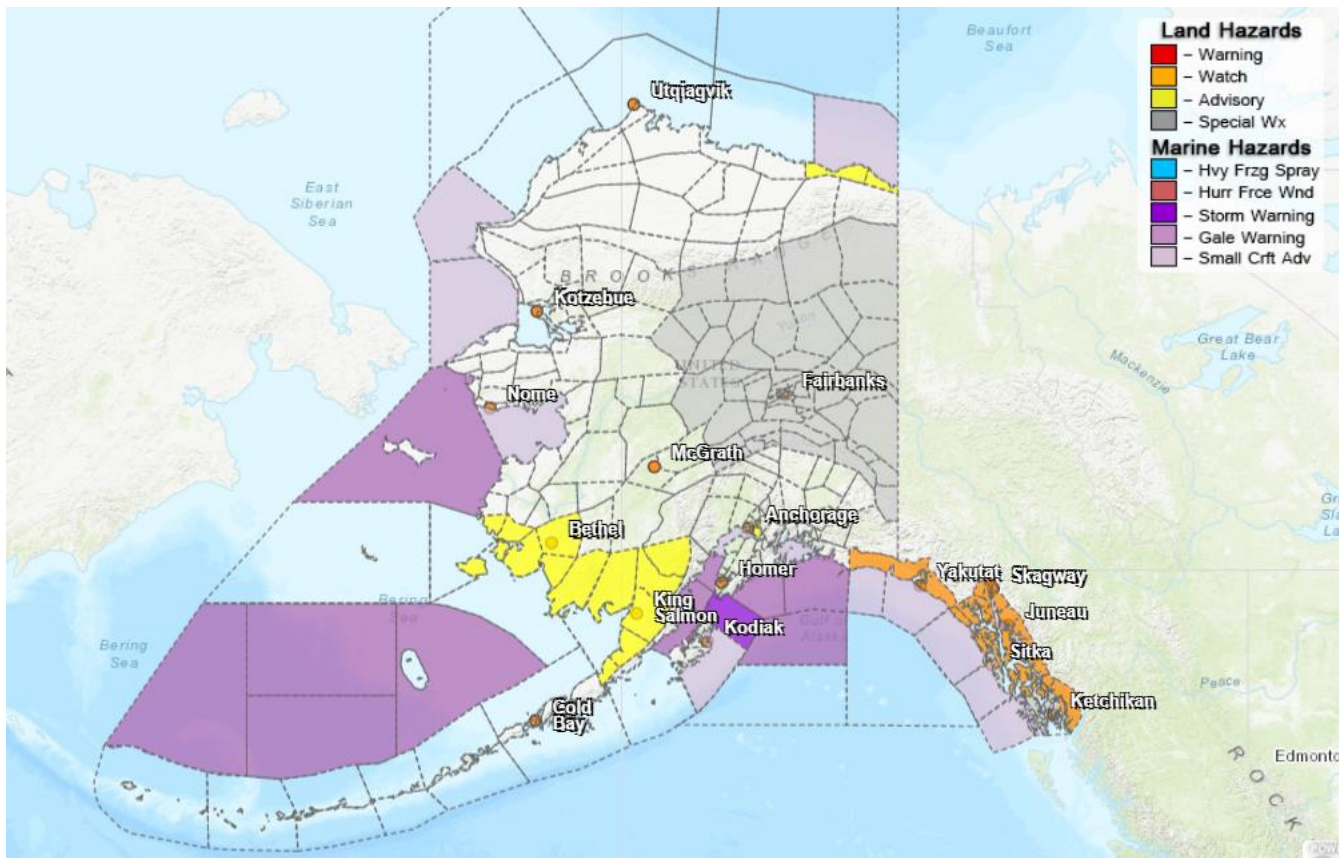
## **Spills of Oil and Hazardous Substances**

The ADEC Spill Prevention and Response page is located at:  
<http://dec.alaska.gov/spar/ppr/spill-information/response/>

## **Alaska Cyber Security Information**

State Employees may sign up for cyber security notifications and alerts at  
<https://oit.alaska.gov/security>

## **Significant Weather:**



Winter Storm Watches for heavy snow accumulation of 4 to 8 inches are in effect from Tuesday morning through Wednesday evening across the entire Southeast Pandhandle from Yakutat to Ketchikan.

Wind Chill Advisories are in effect for the Taiya Inlet and Klondike Highway until 9am Tuesday for wind chills as low as 30 degrees below zero.

Winter Weather Advisories are in effect for the following areas:

- Kuskokwim Delta and Bristol Bay regions from 9pm Monday to 9pm Tuesday for accumulation of up to six inches of snow and sleet mixture.
- Eastern Beaufort Sea Coast until 4pm today for blowing snow.
- St. Lawrence Island and Bering Strait Coast until noon Tuesday for wind chills as low as 50 degrees below zero.
- Anchorage until 11am this morning for areas of dense fog.

Special Weather Statements are in effect for the following areas for very cold temperatures, as low as 30 to 40 degrees below zero:

- Central Interior, Deltana Flats, Tanana Flats, Denali, Eastern Alaska Range, Southeast Brooks Range, Middle Tanana Valley, Upper Koyukuk Valley, Upper Tanana Valley and the Yukon Flats.

For more information and the most current weather, Watches / Warnings / Advisories go to: <http://www.weather.gov/arh>.

### **Avalanche Forecast:**



There are areas near Thompson Pass, Valdez, Haines and Chilkat Lake with considerable risk, and areas near Cordova with moderate risk.

Check the Avalanche Forecast Center closest to your area for the most up to date information on avalanche potential. <https://alaskasnow.org> or <https://www.weather.gov/afc/avalancheweather>

**The Next Situation Report:** will be 01 February 2022. A significant change in the situation or the threat level will prompt an interim report.

This report is posted on the internet at <https://ready.alaska.gov/sitrep>. To register for email distribution, go to <http://list.state.ak.us/mailman/listinfo/dhsem.situation.report>. Direct questions regarding this report to the SEOC at 907-428-7100 or [seoc@alaska.gov](mailto:seoc@alaska.gov)